

YIELD MAP ANALYSIS



PROPERTY: Farm 1

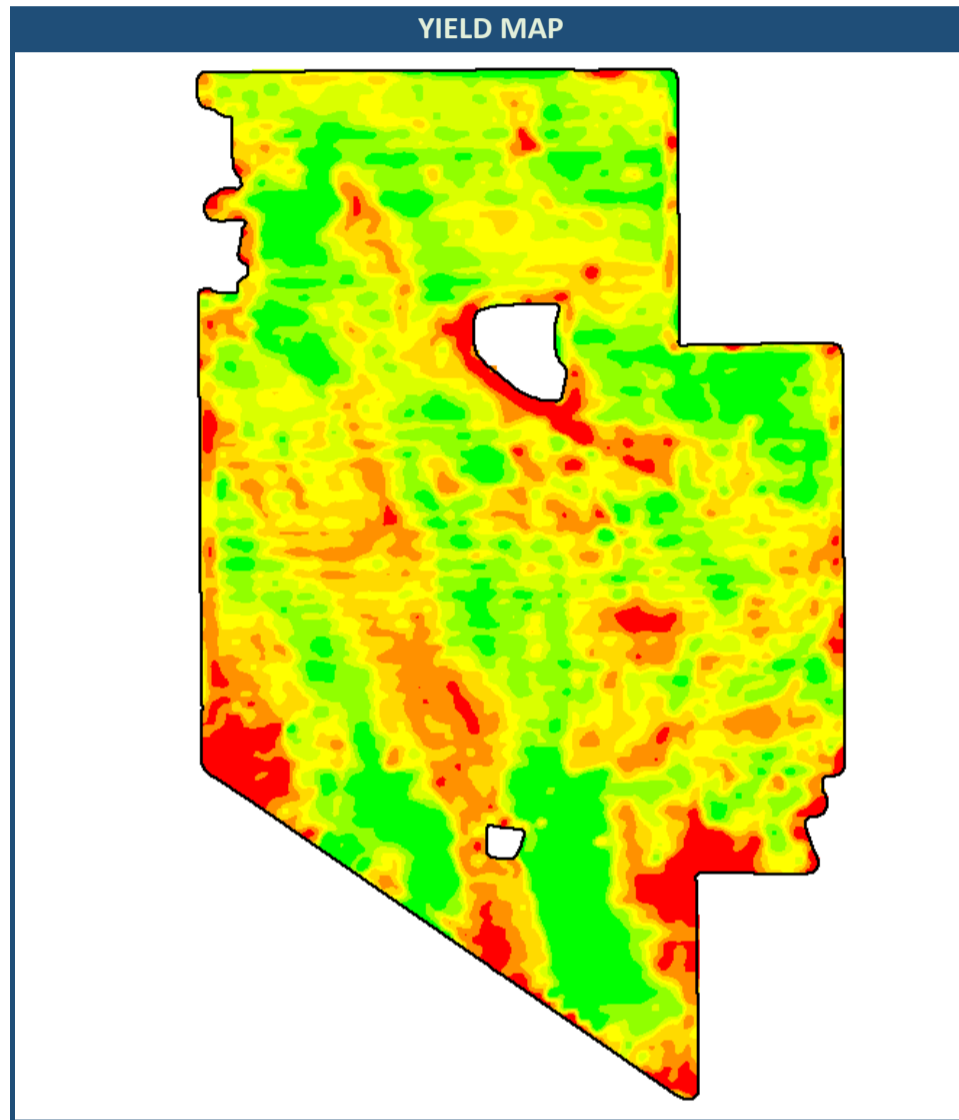
PADDOCK: Paddock 1

WHEAT	T/ha
305.91	Hectares
3.05	Area %

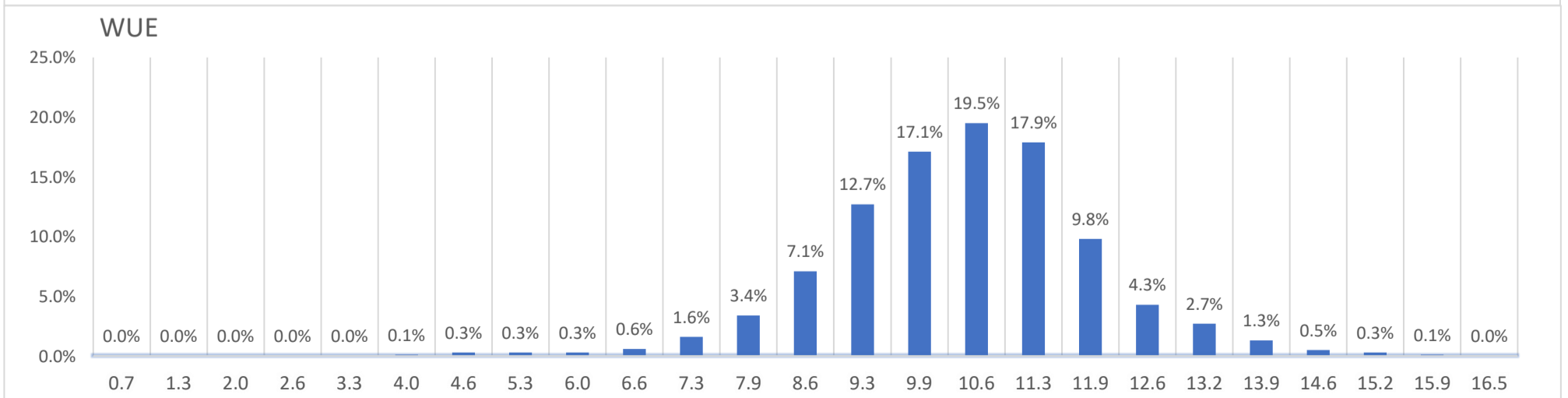
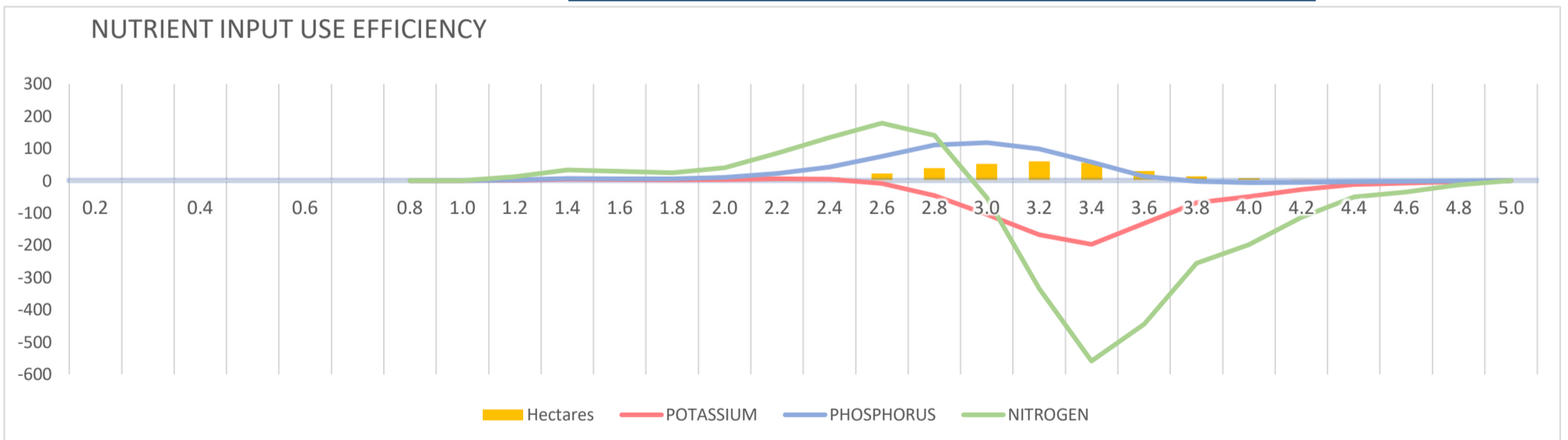
0.2	0.4	0.6	0.8	1.0	1.2	1.4	1.6	1.8	2.0	2.2	2.4	2.6	2.8	3.0	3.2	3.4	3.6	3.8	4.0	4.2	4.4	4.6	4.8	5.0
0	0	0	0	0	0.306	0.918	0.918	0.918	1.835	4.895	10.4	21.72	38.85	52.31	59.65	54.76	29.98	13.15	8.26	3.977	1.53	0.918	0.306	0
0.0%	0.0%	0.0%	0.0%	0.0%	0.1%	0.3%	0.3%	0.3%	0.6%	1.6%	3.4%	7.1%	12.7%	17.1%	19.5%	17.9%	9.8%	4.3%	2.7%	1.3%	0.5%	0.3%	0.1%	0.0%

NUTRITIONAL INPUTS				
FERTILISER APPLIED	RATE	N	P	K
MAP	50 Kg/ha	5.6	11.25	0
Muriate of Potash	20 Kg/ha	0	0	10
Urea	80 Kg/ha	36.8	0	0
UAN	40 Kg/ha	12.8	0	0
UAN	40 Kg/ha	12.8	0	0
	0 Kg/ha	0	0	0
		68	11.25	10

NUTRIENT USE EFFICIENCY	NITROGEN	107%
		2.96 t/ha
	PHOSPHORUS	84%
		3.75 t/ha
	POTASSIUM	126%
		2.50 t/ha



RAINFALL	
NOV	3.5 mm
DEC	0.0 mm
JAN	43.4 mm
FEB	13.4 mm
MAR	1.5 mm
APR	0.0 mm
MAY	31.6 mm
JUN	38.0 mm
JUL	78.6 mm
SEP	7.0 mm
OCT	28.7 mm



	N	P	K	S	Ca	Cu	Zn	Mo	Mn
WHEAT	23.00	3.00	4.00	1.4	0.33	0.93	0.005	0.029	0.04

Applied P	3.75 t/ha			Applied K	2.50 t/ha		
	3.50	0.25	0.75		2.25	0.25	1
	3.25	0.50	1.5		2.00	0.50	2
	3.00	0.75	2.25		1.75	0.75	3
	2.75	1.00	3		1.50	1.00	4
	2.50	1.25	3.75		1.25	1.25	5
	2.25	1.50	4.5		1.00	1.50	6
	2.00	1.75	5.25		0.75	1.75	7