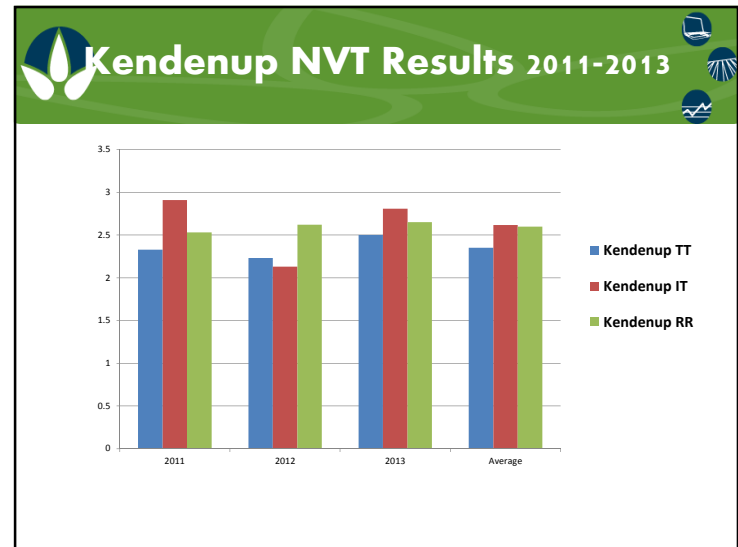
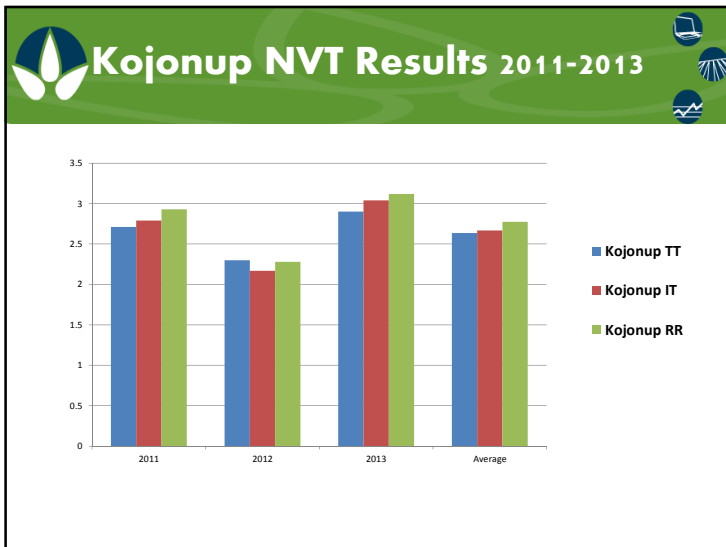




Introduction

- Canola Performance 2011-2013
- Economics and decision making in selecting canola
- Agronomic strategies to increase canola yields



Average NVT Yields Kojonup

	2011	2012	2013	Average
Kojonup TT	2.71	2.3	2.9	2.64
Kojonup IT	2.79	2.17	3.04	2.67
Kojonup RR	2.93	2.28	3.12	2.78

Popular TT Yields

TT	2011	2012	2013	Average
Gem	2.83	2.29	2.64	2.59
Crusher	3.25	2.56	2.79	2.87
Stingray	1.88	2.36	3.03	2.42
HT559	3.19	2.47	3.32	2.99
HT555	3.02	2.44	3.04	2.83
Wahoo		2.22	2.91	2.57
Jackpot		2.39		2.39
	2.8	2.39	2.95	2.67

Popular IT Yields

IT	2011	2012	2013	Average
575	2.81	2.13	2.79	2.58
Archer	3.1	2.14	3.45	2.90
46Y83	3.37			-
45Y86	2.67	2.14	3.29	2.7
45Y88		2.28	3.38	2.83
	2.98	2.17	3.22	2.75

Popular RR Yields

RR	2011	2012	2013	Average
RR404	3.4	2.2	3.21	2.94
RR505	3.38	2.2	3.08	2.89
GT50	3.5	2.54	3.21	3.08
43Y23		2.34	3.19	2.77
	3.42	2.32	3.17	2.92

TT	2011	2012	2013	Average
Gem	2.83	2.29	2.64	2.59
Crusher	3.25	2.56	2.79	2.87
Stingray	1.88	2.36	3.03	2.42
HT559	3.19	2.47	3.32	2.99
HT555	3.02	2.44	3.04	2.83
Wahoo		2.22	2.91	2.57
Jackpot		2.39		2.39
	2.8	2.39	2.95	2.67
IT	2011	2012	2013	Average
575	2.81	2.13	2.79	2.58
Archer	3.1	2.14	3.45	2.90
46Y83	3.37			-
45Y86	2.67	2.14	3.29	2.7
45Y88		2.28	3.38	2.83
	2.98	2.17	3.22	2.75
RR	2011	2012	2013	Average
RR404	3.4	2.2	3.21	2.94
RR505	3.38	2.2	3.08	2.89
GT50	3.5	2.54	3.21	3.08
43Y23		2.34	3.19	2.77
	3.42	2.32	3.17	2.92

Expected Yield from NVT's

	Yield
TT	2.67
IT	2.75 (+80kg)
RR	2.92 (+250kg)

Costs and Returns of Different Canola Packages

	Cost Per Ha		
	TT	IT	RR
Seed	10	51	51
Chemical	46.1	60	53.6
Fertilizer	160	160	160
CBH Charges + Freight	63.27	66.41	82.26
Technology Fee	0.00	0.00	14.40
Extra Freight	0.00	0.00	4.02
Extra Nutrient Removal		6.28	19.62
Total	279.37	343.69	384.90
Yield	2.62	2.75	2.92
Price/T	550.00	550.00	530.00
Total Income	1441.00	1512.50	1547.60
Gross Margin	1161.63	1168.81	1162.70
		7.18	1.08

What about Hybrid TT?

	Cost Per Ha			
	TT	IT	RR	HT TT
Seed	10	51	51	51
Chemical	46.1	60	53.6	46.1
Fertilizer	160	160	160	160
CBH Charges + Freight	63.27	66.41	82.26	72.21
Technology Fee	0.00	0.00	14.40	0.00
Extra Freight	0.00	0.00	4.02	0.00
Extra Nutrient Removal		6.28	19.62	29.04
Total	279.37	343.69	384.90	358.35
Yield	2.62	2.75	2.92	2.99
Price/T	550.00	550.00	530.00	550
Total Income	1441.00	1512.50	1547.60	1644.5
Gross Margin	1161.63	1168.81	1162.70	1286.15
		7.18	1.08	124.52

What about Hybrid RR vs OP RR?

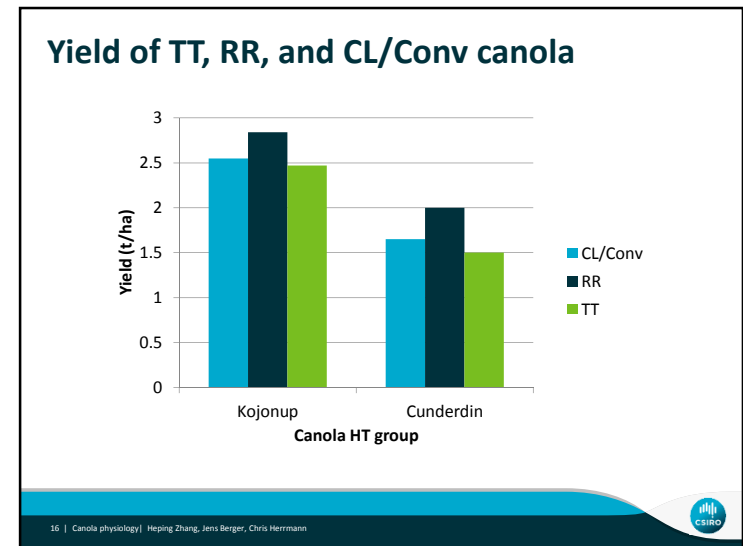
RR	2011	2012	2013	Average
RR404	3.4	2.2	3.21	2.94
RR505	3.38	2.2	3.08	2.89
GT50	3.5	2.54	3.21	3.08
43Y23		2.34	3.19	2.77
	3.42	2.32	3.17	2.92
OP RR	2011	2012	2013	Average
Cobra	2.99	2.41	2.9	2.77

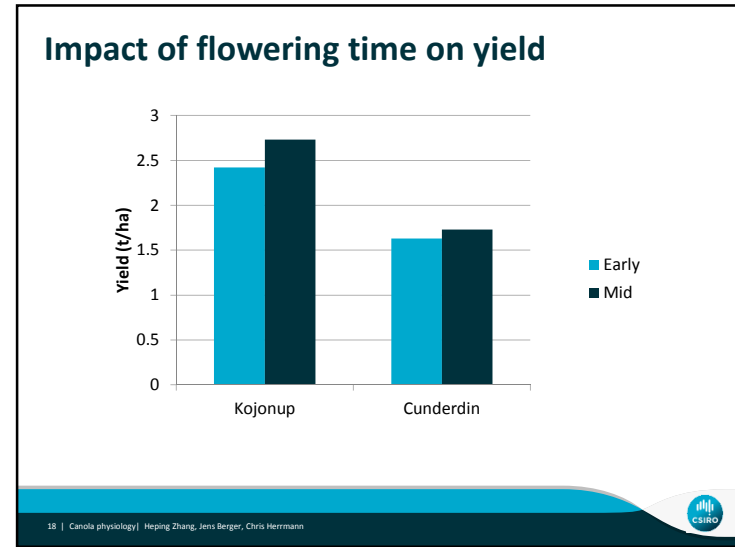
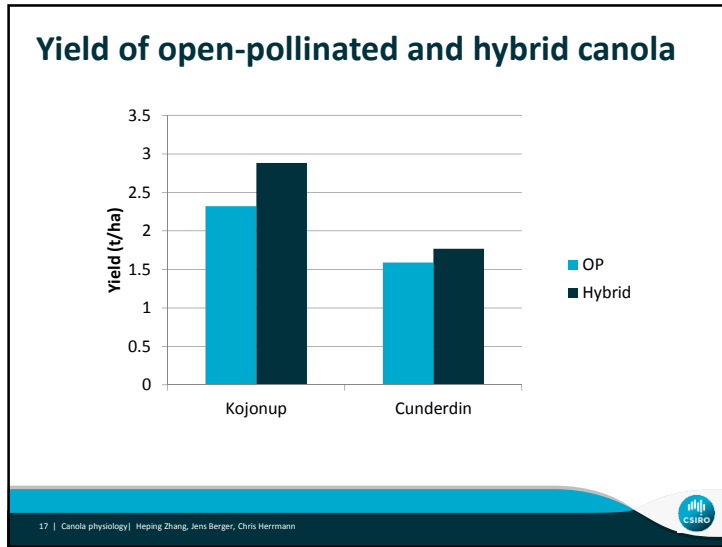
What about Hybrid RR vs OP RR?

	Cost Per Ha				
	TT	HT TT	IT	RR	RR OP
Seed	10	51	51	51	40
Chemical	46.1	46.1	60	53.6	53.6
Fertilizer	160	160	160	160	160
CBH Charges + Freight	63.27	72.21	66.41	82.26	78.03
Technology Fee	0.00	0.00	0.00	14.40	14.40
Extra Freight	0.00	0.00	0.00	4.02	4.02
Extra Nutrient Removal		29.04	6.28	19.62	11.77
Total	279.37	358.35	343.69	384.90	361.82
Yield	2.62	2.99	2.75	2.92	2.77
Price/T	550.00	550	550.00	530.00	530
Total Income	1441.00	1644.5	1512.50	1547.60	1468.1
Gross Margin	1161.63	1286.15	1168.81	1162.70	1084.28
		124.52	7.18	1.08	-55.35

What about Hybrid RR vs OP RR?

	Cost Per Ha					
	TT	HT TT	IT	RR	RR OP	RR OP
Seed	10	51	51	51	40	10
Chemical	46.1	46.1	60	53.6	53.6	53.6
Fertilizer	160	160	160	160	160	160
CBH Charges + Freight	63.27	72.21	66.41	82.26	78.03	78.03
Technology Fee	0.00	0.00	0.00	14.40	14.40	14.40
Extra Freight	0.00	0.00	0.00	4.02	4.02	4.02
Extra Nutrient Removal		29.04	6.28	19.62	11.77	11.77
Total	279.37	358.35	343.69	384.90	361.82	331.82
Yield	2.62	2.99	2.75	2.92	2.77	2.77
Price/T	550.00	550	550.00	530.00	530	530
Total Income	1441.00	1644.5	1512.50	1547.60	1468.1	1468.1
Gross Margin	1161.63	1286.15	1168.81	1162.70	1106.28	1136.28
		124.52	7.18	1.08	-56.42	-25.35

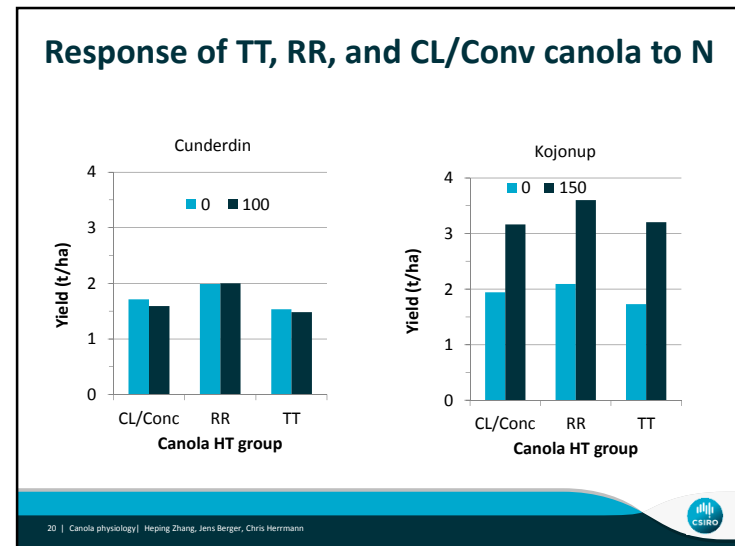


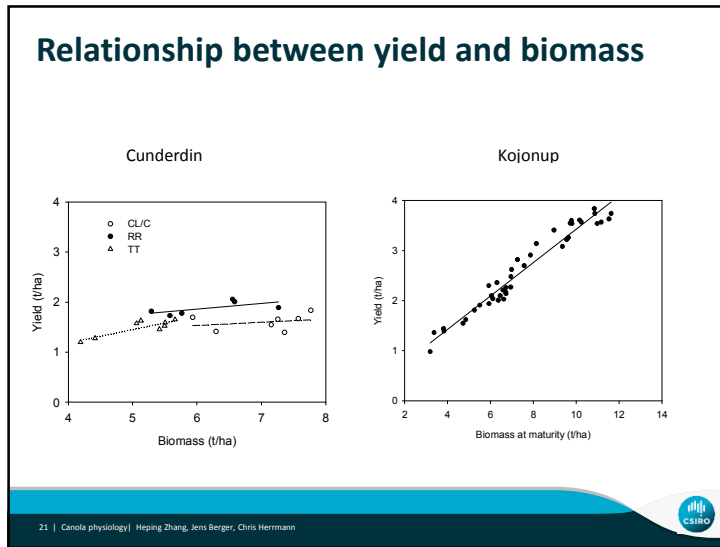


What about N?

- Can we do the same thing with pushing our Nitrogen?
- \$40/ha = 70kg Urea

20 | Canola physiology | Heping Zhang, Jens Berger, Chris Herrmann





Recommendations

- Select your canola package carefully
- Do you need RR?
- Watch your seed count and adjust sowing rate accordingly
- Get Nitrogen on early to promote biomass
- Remember good agronomic practices are more important than variety